



NARROMINE
CHRISTIAN SCHOOL



Parent Information Booklet 2022

Nurture for today. Learning for tomorrow. Character for eternity.

Philosophy

Our philosophy of education comes from the Biblical understanding that people were originally created in the image of God to exist in a harmonious relationship with Him. Through disobedience this relationship was destroyed and the image of God was almost erased. Through Jesus life and death on earth, God has provided a way for people to be able to once again experience the harmonious relationship with God that He originally intended.

We view education as a learning process designed to give a necessary understanding of God and to restore aspects of God's image in people. In this way education is an important means of regaining the harmony that was lost through the human fall.

We believe that the Bible is our guide to understanding God and His plans and purposes for our lives. The values and principles found in the Bible are to guide our lives. As a Christian school we aim to teach the students in our care to make informed life choices based on these principles and values. Through these choices students will develop characters based on a love for God, a caring respect for others and a healthy self-worth.

We hope that each child who comes into our care learns to enjoy a fulfilling earthly life while preparing for life eternal.

To this end, our staff work with each child to instil values that will enhance his/her spiritual, mental, physical and social development.

Vision Statement

Nurture for Today • Learning for Tomorrow • Character for Eternity

Mission Statement

It is our mission to motivate, nurture and celebrate spiritual, academic and personal growth in a Christ-inspired environment that serves the community.

School Identity

Core Values

The nine values chosen for Adventist Schools are motivated by the overarching value of love and are evident in acts of service.

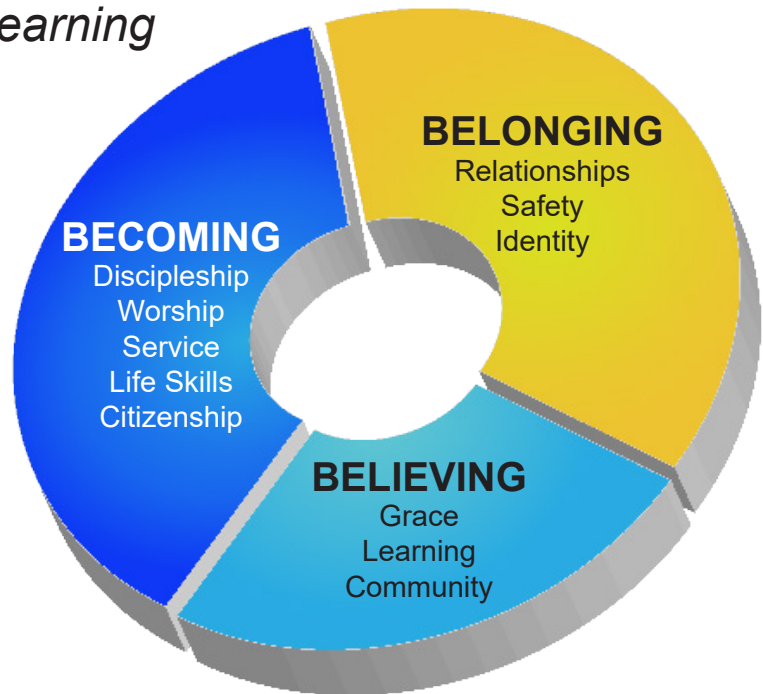
LOVE
EXCELLENCE
COMPASSION
HUMILITY
RESPECT
INTEGRITY
JUSTICE
DISCERNMENT
RESPONSIBILITY
HOPE
SERVICE

...BUT THE GREATEST OF THESE IS LOVE. 1 CORINTHINIANS 13

STATEMENT OF SPECIAL CHARACTER

The Adventist School;
A Community of Faith and Learning

***Bible-based,
Christ-centered,
Service-oriented,
Kingdom-directed***



BELONGING

Is an essential element in the life of every individual. Adventist schools foster a sense of belonging to:

- * The family of God by building positive relationships.
- * A safe and attractive learning environment, where individuals are empowered to reach their potential .
- * A community that provides identity and nurture.

BELIEVING

Is an individual and intellectual choice that impacts on actions. Adventist schools encourage belief in:

- * Jesus Christ as Redeemer and Lord of our lives.
- * The importance of learning and making positive lifestyle choices.
- * The value of interdependence and collaboration in building harmonious communities.

BECOMING

Recognises that individuals are continually in a time of growth and development. Adventist schools challenge each person to become:

- * Active in discipleship, worship and service for God.
- * Learners with skills and values that equip for life.
- * Informed, responsible and compassionate citizens.

Award System

At Narromine Christian School, it is the intention of the staff to reward the many positive things that students do throughout each and every week of the school year. Strength, our school wide, faith-based behaviour management system seeks to reward students for positive choices and promoting our schools values.

Bullying

Bullying is not the same thing as a disagreement between two people. Bullying is the misuse of power, position or privilege. It is any form of behaviour that is not welcome and not asked for; done to intimidate, coerce, create fear, control, embarrass, exclude, or cause pain/discomfort. It is always one way, rather than an exchange.

Students are entitled to enjoy their educational experience without fear of harassment from any sector of the school community.

The school will ensure that adequate classroom and playground supervision is provided to minimise the opportunities for bullying to occur.

Each group within the school community has a specific role in preventing and dealing with bullying.

Parents, teachers, students and the community will be aware of the schools position on bullying.

Every incident of bullying is unique. Bullying varies in its severity and consequential impact on those involved.

Students, staff, parents and members of the wider community can expect;

1. that students will be safe at school, free from fear of bullying, harassment and intimidation.
2. to be involved in the collaborative development of the school anti bullying procedures and strategies.
3. to know what is expected of them and others in their relationships with other members of the school community.
4. that all students will be provided with appropriate support when bullying occurs.

Anti-bullying programs may be integrated into weekly Bible, PDHPE program or through our school values.



IS IT ***BULLYING***

WHEN SOMEONE SAYS OR DOES SOMETHING
unintentionally
HURTFUL AND THEY DO IT ONCE, THAT'S
RUDE.

WHEN SOMEONE SAYS OR DOES SOMETHING
intentionally
HURTFUL AND THEY DO IT ONCE, THAT'S
MEAN.

WHEN SOMEONE SAYS OR DOES SOMETHING
intentionally HURTFUL AND THEY *keep doing it*
EVEN WHEN YOU TELL THEM TO STOP OR SHOW THEM THAT
YOU'RE UPSET - THAT'S
BULLYING.

Canteen

The Home and School Association in conjunction with the principal run the school canteen. Canteen is run on a Monday and Thursday each week and recess, lunch and snacks can be purchased via the school's canteen app Qkr. The menu and price of each item will be displayed on the school app and you will only be able to order from the current menu. Orders must be placed by 9:15 am on canteen days. Late orders can not be accepted so please ensure you order on time to avoid disappointment. Snacks including chips, iceblocks and drinks can be purchased with cash on the day of canteen.

Communication Procedures

A good relationship between home and school depends on effective communication. Every effort is made to work closely with parents for the success of each student's learning program. Occasionally concerns or issues arise. At Narromine Christian School, we pride ourselves on our open door policy and encourage all parents/caregivers to talk to us if they have any concerns no matter how small.

At Narromine Christian School we appreciate that at times issues do occur and misunderstandings happen. Please approach the school with an open mind and positive attitude for a fair outcome as your optimistic model will prove beneficial to your child's attitude towards authority and any future interactions. It is also counterproductive to discuss issues with other members of our school community before all facts are known.

As you can appreciate school is a very busy place and while we do endeavour to communicate personally our major forms of communication with our school families are email and our school app. It is your responsibility to check both regularly.

Newsletter

A school newsletter is published and emailed each Monday. The newsletter contains information that keeps parents up to date with the current events of the school. The newsletter is also available for viewing on our school website and our school app.

Calendar/Key Dates

The school calendar with many school events and relevant dates is found on the school app (School Stream) under the Events/Calendar tab. Please appreciate that changes can occur and additional events may come up so check this tab regularly.

Website

The school's website www.narrominechristianschool.com is comprehensive and has detailed information about the school. School publications and forms can also be downloaded from the website.

School App (School Stream)

The school app has information about the school, the school calendar, canteen menus, newsletters as well as an attendance submission form. It is also the primary form of communication for reminding parents about upcoming events. It is strongly advised that all parents download this app on their smartphone as it is a very quick and easy way for the school to communicate with the parent body.

Download School Stream

Add profile - Narromine Christian School

Add phone or email details to receive verification code

Add your name

Narromine Christian School will need to approve and once this is done you can access the app

Please notify the school of any family members wishing to download the app. As only names that the school is familiar with will be approved.

Curriculum

Narromine Christian School follows the NESA curriculum with a Christian focus. As the Australian Curriculum has been introduced we have been implementing these changes in our classrooms.

Pupils with varying levels of ability and learning differentiations are catered for in each classroom

The four stages of primary school are:

Early Stage 1	Stage 1	Stage 2	Stage 3
Pre-Kindergarten Kindergarten	Year 1 and Year 2	Year 3 and Year 4	Year 5 and Year 6

Our school operates with single stream classrooms.

The Key Learning Areas (KLA's) are:

Biblical Studies (known as Encounter) encourages the students to have a connection with God. Through studying the Word, students learn about God's unconditional love, and about Jesus' life and teachings as well as the Plan of Salvation. Students also participate in Worship and Chapel. Year 5 & 6 students have the opportunity to participate in extra Bible studies with our school Chaplain if desired.

English includes reading, writing, talking and listening, as well as language structures, punctuation, spelling and grammar. Students learn to read for information and for pleasure. An important focus in our english curriculum for K-2 is the explicit and systematic teaching of synthetic phonics and the use of decodable readers to teach students how to read.

Mathematics includes working confidently with numbers, shapes and measurement and includes measuring time and calculating with money, as well as geometry, algebra and working with data and graphs. Students are also required to be fluent in their times and division tables.

Science and Technology develops students' knowledge and skills in thinking, investigating and problem solving. It builds on the curiosity children have about their natural and built environments.

HSIE covers the areas of history and geography. Students gain an understanding of their nation and its place in the world and learn effective ways of improving the quality of their society and environment.

Creative Arts includes such areas as visual arts, music, drama and dance. Students are given opportunities to explore their creativity in each of these areas while also learning to appreciate and value what each art form offers.

PDHPE (Personal Development, Health and Physical Education) includes the development of knowledge, skills and attitudes towards a healthy, active and fulfilling life. Students learn how their bodies change and the importance of good food and regular exercise. Students also learn skills to play individual and team sports as well as the value of sportsmanship and teamwork.

Digital Technology grows students understanding and proficiency in the digital world. Students spend time on typing practice, using VR headsets, creating and coding in the digital space using a variety of technology such as beebots, spheros, lego etc.

Reporting and Learning Checks

Literacy and numeracy testing are conducted 3 times a year to assess student learning and areas of need. We believe our class instruction practices are designed to improve student learning but where required students receive additional support in small groups both in and out of the classroom. All interventions used are research based and known to be the best on the market.

Formal communication regarding a student's growth comes in the form of initial interviews in Term 1, mid and end of year reports, Parent-teacher interviews are held at the end of term 1 & 2. Teachers also keep in contact with parents and carers, at other times throughout the year, in regards to their child's progress and development.

Screeners

Speech and Language Screener

Screeners are used with our pre-kindy and primary students to determine if there are concerns about speech and language development. For younger children (pre-kindy to 7 year olds), they mainly focus on sound production and if they can use and understand language at an age appropriate level.

With older students (8 years plus), the focus is on using and understanding language at an academic level such as understanding and processing verbal information and being able to convey topic specific meaning verbally and in writing.

The interactive and engaging screeners are conducted by our learning support coordinator and the results are discussed with parents/caregivers.

Occupational Therapy Screening

An occupational therapist conducts screening in our pre-kindy and kindy classrooms. Generally, kindergarten will be screened during term 1. The occupational therapist observes the children engaging in tasks and group learning times as well as conducting additional screening tasks with small groups or individuals.

The information from these screeners is used by our teachers to help further the children's current skills and inform if further professional support would be of benefit. Information from the occupational therapist will be provided to parents about your child's strengths and strategies to develop skills in other areas if required.

Excursions

During the year, pupils participate in various activities connected with the school program and curriculum. These may include:

- Excursions/incursions directly connected to studies
- Natural, cultural, historic features or current interest
- Sporting activities
- Performances for church or community groups
- School functions

While parents sign an annual local excursion permission form, parents will always be notified before any excursion occurs or will be sent another form to sign when students are to leave the local area.

The cost for most excursions is covered at the beginning of the school year as part of the facility fee.

Enrolments

All children who are eligible to attend a Government school are welcome to apply for enrolment at our school. Narromine Christian School is open to all students regardless of their race, gender or religion. While no religious test is applied, all students are expected to: live in harmony with the schools standards and regulations, show respect for God's Word and participate in the Christian classes and activities of the school.

Enrolment Procedures

At Narromine Christian School we accept students enrolling into Kindergarten who turn five years of age by the 31st March in that year.

Stage 1: Enquiry

Enquiries about enrolments will generally be handled by the office staff. This may include:

1. the provision of application forms, the school handbook or other information booklets
2. information about fees
3. information about transport options
4. information about school uniform

Stage 2: Formal Application

Parents seeking enrolment for their child at the school should formally commence the process by submitting an Enrolment Application Form to the school office. Parents will need to supply copies of the following documents to support the application:

1. Birth Certificate
2. Immunisation Certificate
3. Previous school reports
4. Legal documents relating to special family circumstances, eg. AVO
5. Documentation / reports relating to learning and support needs.

Stage 3: Enrolment Interview

When parents apply for admission, the office staff will organise an enrolment interview with the principal.

The principal, as part of the enrolment interview will:

1. answer questions
2. discuss the Christian values and nature of the school and how the family can contribute to the school community
3. discern whether the family are part of the Adventist community or the wider community
4. check if any family court orders apply to parental access
5. sight and copy required documents
6. arrange a guided tour of the school and introduce them to the appropriate teacher
7. discuss transportation needs of the student to and from the school
8. discuss the school routine and the canteen services
9. inform them of the appropriate fee structure and discuss a fee payment schedule
10. show them the appropriate uniform for their child.

For Kindergarten applicants only:

1. arrange for the child to come in for the three Orientation Days scheduled in October / November
2. ask Kindergarten specific interview questions to gain more insight into the child's school readiness

Stage 4: Enrolment Decision

The principal will recommend to the school council the names of the applicants. Parents will be notified in writing if their application is unsuccessful. Successful applicants will be sent a letter offering enrolment in the school. If parents wish to take up this offer, they need to sign and return the Letter of Offer with a non-refundable application fee. The office staff will maintain a list of all offers and their present status.

Stage 5: Registration

At the commencement of the new year, successful applicants will need to complete the registration process. This includes; the completion of various forms with information required by the school and for the mandatory reporting to government agencies throughout the school year. In addition, the family will need to make arrangements for the payment of school fees.

All students from K-6 will be informed of their obligations upon joining the school eg. expectations in relation to rules, homework, uniform, our spirit of culture etc.

Re Enrolment

If a student has previously withdrawn or had their enrolment terminated by the school, application for re-entry may be considered by the school's administration provided a:

1. new application is completed
2. positive school report from the student's present school is received
3. recommendation from previous school's administration if an Adventist school
4. discussion with teachers and the school council.

The final decision on this enrolment application will be made by the school council.

Fees

Please note the following general points regarding fees:

1. Fees are invoiced at the beginning of each term, annual fee accounts can be issued if the registrar is notified at the beginning of term 1.
2. All fee payments must be made by the fourth week of the school term.
3. Fees may be paid in instalments however approval must be granted by the school registrar.
4. Fees may be paid by cash, cheque, direct bank transfer and eftpos.
5. The fee invoice for the term's fees will be posted out during the first week of the school term.

Tuition Fees

Tuition fees and additional costs such as books, art/craft and sports are determined by the local school administration. Fee accounts are issued each term. Payment is due in week four of the term.

Tuition Fees – per term (4 terms)

1 child	\$325.00
2 children	\$601.25
3 children	\$828.75
4 children	\$1023.75

The 5th child and subsequent children attending a school in our system receive free tuition.

Facility (Consumables) Fee & Student Accident Insurance

A facility fee of \$250 is charged, for each student, to cover all books, stationery, paper and arts & crafts. This fee is due on registration day each year or at the commencement of enrolment. The school provides student accident insurance at a cost of \$15.95 per student each year.

Excursion Fees & Sport Fees

The fees for most excursions, incursions and expert sporting tuition are included in the school facility fee. The classroom teacher will advise you of any additional costs associated with each individual excursion.

Financial Aid

Limited assistance with school fees may be available for families facing financial difficulties. Please contact the principal for information.

Withdrawal

When a student is withdrawn part way through a term, fees for that term are non-refundable.

Food

Recess

Recess should consist of fruit and / or vegetables – limited snack foods – as they are high in either sugar, salt or fat. Water is encouraged for drinking during the day. Students who bring water in their drink bottles are able to take them into class.

Lunch

Lunches should consist of healthy food, low in fat and sugar.

All children remain seated with their teacher for the first 10 minutes of the lunch break usually in class after which time they may play, provided they have finished their food. Please provide your child an amount of food that they can comfortably consume in a 10 minute period.

All students are encouraged to bring a bottle of water each day or they can bring a water bottle which they can leave at school and refill daily so they can have water to drink during the day. (Please ensure it is clearly labelled with your child's name).

NUTS: Narromine Christian School is a nut free school. Please ensure products containing nuts are **NOT** a part of your child's lunch box.

We are aware that some students in our school have a nut allergy. Those students, if they come in contact with a nut product, can suffer life threatening consequences. It can be easily contracted from a simple handshake or touching of a student's table who may have had some nuts in their food.

We ask that you **DO NOT** provide the following in your child's lunch box:

- Peanut butter
- Nutella
- Chocolates which contain nuts
- Muesli bars which contain nuts
- Any nuts
- Nougat
- Biscuits which contain nuts
- Cakes which contain nuts

What can you put in your child's lunchbox that is nut free?

- Vegemite/marmite sandwiches
- Cheese sandwiches
- Salad sandwiches
- Dried fruit
- Yoghurt
- Cheese sticks
- Chopped or tinned fruit
- Fruit strips
- Check all biscuit labels and if you are not sure please leave it out
- Any bread-based foods

Our school canteen has also adopted this nut-free policy.

If your child has a nut or food allergy please make sure you inform the school and their teacher as soon as possible so that we can ensure your child does not come into contact with any foods that can trigger a reaction.

Please help us in providing a nut free school and assisting those parents who have children who may have a life threatening reaction.

Homework

Homework benefits children by complementing classroom learning, fostering good study habits and providing opportunity for students to be responsible for their own learning. Homework also provides a link between the teacher and parent.

Students at Narromine Christian School are expected to do their homework to the best of their ability. Homework is given on Mondays, Tuesdays, Wednesdays and Thursdays, leaving the weekend free for family activities.

We ask parents to support our homework procedure by:

- Providing space and time for their child to do their homework.
- Endeavouring to prevent interruptions such as television, radio and other children.
- Checking that homework is complete and signing where appropriate.
- Using the methods suggested by the teacher for practice of skills
- Informing teachers of problems when they arise.

Ideally, homework should be done before any television is watched, not long after school, while your child is still fresh.

Homework will be checked every day by the class teacher or aide. Students who have incomplete homework will be required to stay in at recess or lunch to finish.

Sometimes, students will be given 'homework off' as a treat or for a special occasion.

K-2 Homework Activities:

- Reading and writing of tricky words
- Reading activities to, with and by parents
- Simple maths activities to reinforce basic concepts
- 1 minute fluency reads
- Year 1 & 2 addition and subtraction fast facts
- Year 2 times tables for terms 3 & 4

3-6 Homework Activities;

- Reading activities to self and questions asked by parents (minimum of 20 minutes reading)
- Times table activities
- Maths activities to reinforce basic concepts (where required)
- 1 minute fluency reads
- Decodable or levelled reader as required

Parents are able to make an effective contribution to their children's schooling by showing an interest in their learning and giving individual help. We encourage parents to provide direction, ideas and resources for homework where necessary but we encourage students to complete the work themselves.

Homework will be checked by class teachers each day. Students are encouraged to demonstrate organisational skills and manage their time wisely at home to complete and submit their homework.

Students with incomplete homework will complete their homework at recess or lunch.

Continued incomplete homework will result in a parent, teacher and student conference to remedy the issues.

Hours

Bell Schedule	Monday - Friday
Staff Worship	8:00am
Staff on Duty	8:20am
First Bell	8:45am
Recess Eating Bell	11:00am
Recess Play Bell	11:10am
End of Recess Bell	11:30am
Lunch Eating Bell	1:00pm
Lunch Play Bell	1:10pm
End of Lunch	1:30pm
End of Day Bell	2:55pm

Please Note: Parents are requested to make every effort to ensure that children are punctual. Parents are also requested to ensure students are picked up on time at the end of the day as minimal to no supervision is available when staff are in meetings after school.

Houses

Narromine Christian School has three houses, Nharrang, Girrawaa and Bandharr. Each child is allocated a house when they enrol. The house system provides a forum for participation for all students in the areas of sport, public speaking, music, choir, drama, team activities and academic challenges. Each house has members from Kindergarten to Year 6 and has a Head of House (Teacher) and House Captain (Year 6 student). The focus of the house activities is to build team work, cooperation, participation and self esteem.

Nharrang is a Wiradjuri word for Blue Tongue Lizard, house colour **blue**.

Girawu is a Wiradjuri word for Goanna, house colour **green**.

Bandhaa is a Wiradjuri word for Kangaroo, house colour **red**.



Pupil Free Days/Public Holidays

Each year some days are taken as pupil free days. This time is used for planning, curriculum development and professional learning. Parents/Guardians are given advance notice of these impending dates so that alternative care can be provided. Where possible, the school calendar records these dates.

Tuesday, January 26, 2022	Australia Day (Public Holiday)
Friday, April 15, 2022	Good Friday (Public Holiday)
Monday, April 18, 2022	Easter Monday (Public Holiday)
Monday, April 25, 2022	ANZAC Day
Friday, June 10, 2022	Pupil Free Day
Monday, June 13, 2022	Queen's Birthday (Public Holiday)

Registration Day

Registration Day occurs the week before school starts each year, from 8:00 am to 4:00 pm. All parents will receive a registration package and will need to:

1. Complete forms for school organisation
2. Submit excursion permission forms - via google forms
3. Pay facility fee (\$250 per child)
4. Obtain the necessary books to be covered and named
5. Chat with your child's teacher

2022 Registration Day Thursday, January 20, 2022



School Office

The school office is open every day from 8.20am to 4.00pm.

Sickness or Accident

The school has limited facilities to care for students who are unwell. Parents/Guardians will be contacted when the sickness is deemed to be more than a passing minor problem. Simple first aid will be applied to minor cuts and abrasions at the school.

In the case of an accident of a serious nature, parents/guardians will be contacted immediately. If parents/guardians cannot be contacted, the student will be taken to the nearest doctor. All medical costs are the responsibility of the parent/guardian.

It is the responsibility of the parent/guardian to ensure that the school has up to date medical and contact information.

Sport

Students have the opportunity to participate in a variety of sport competitions at our school and with other schools. Sport is a part of the curriculum and each student is required to take part. If a student is ill or injured then a note from home is to be provided to the classroom teacher stating the reason for the exclusion from the sporting activity. In addition to a weekly sport lesson, each class participates in regular physical education lessons. Full sports uniform and a hat are required for all sporting and physical education activities.

Swimming

Swimming lessons are conducted each year by qualified swimming instructors.

Swimming Carnival

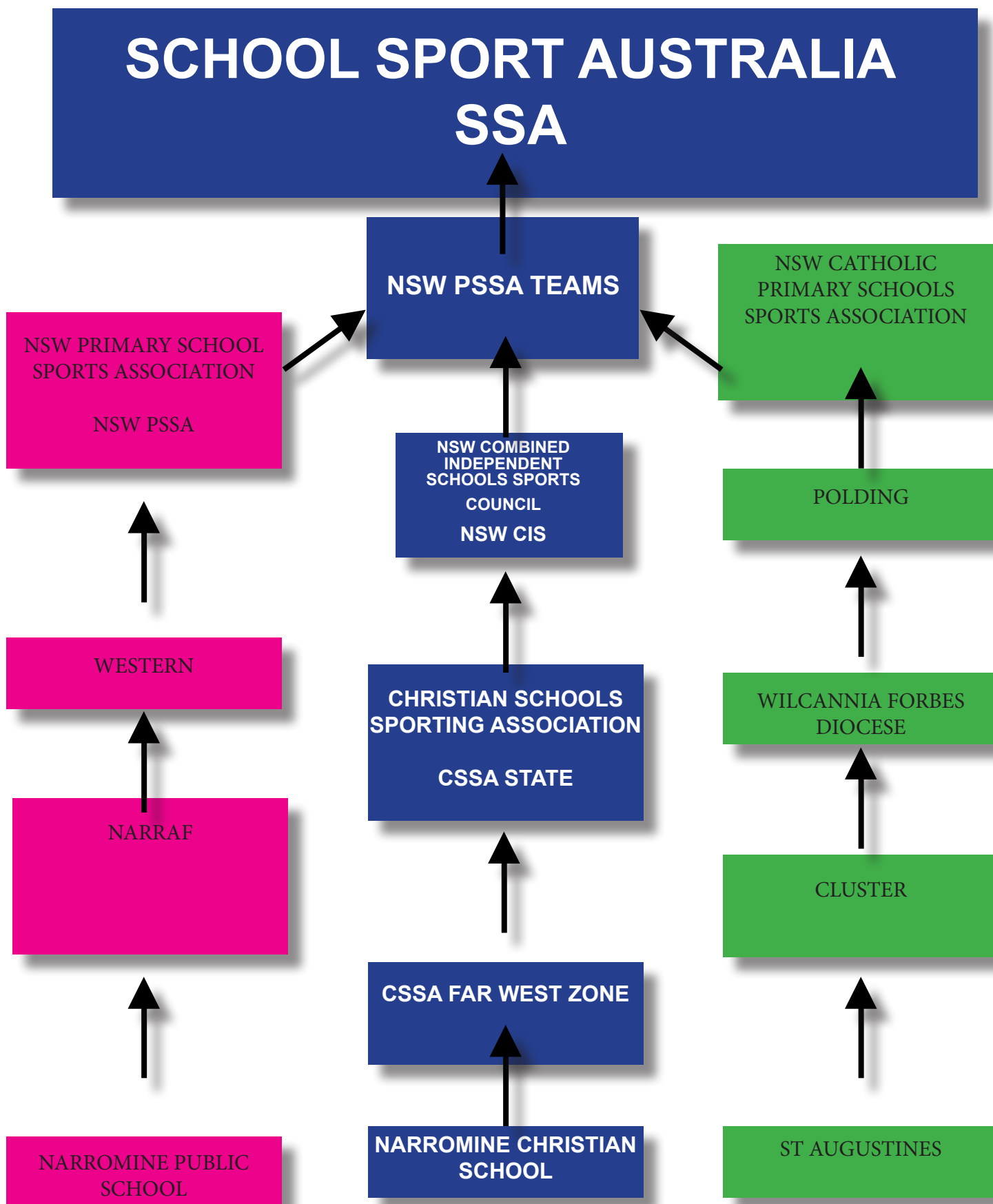
Students compete in a swimming carnival hosted by our school in term one. Students who excel in their age categories go on to participate in the CSSA far west zone championships. In addition to this students who excel at regional level may participate in state carnivals.

Cross Country

At the end of term one students take part in a cross country carnival hosted by our school. Students who excel in their age categories go on to participate in the CSSA state cross country carnival.

Athletics Carnival

During term two students take part in an athletics carnival that we host. Students who excel in their age categories go on to participate in the CSSA far west zone championships. In addition to this students who excel at regional level may participate in state carnivals.



Strength

At Narromine Christian School we have implemented a faith-based behaviour program, STRENGTH. Students earn special tokens for displaying exceptional behaviour in line with the values displayed amongst the tree roots below. When students are presented with a token, they place it on a class chart to progress towards the following acknowledgments.

Teacher's Award

Earned by 10 behaviour tokens and presented in class.

STRONG Student Award

Earned by 5 Teacher's Awards. This is presented at chapel on Friday. Students receive a small gift and a special mention in the teacher's portion of the school newsletter.

Principal's Award

Earned by 3 STRONG Student Awards. This is presented at chapel on Friday. Students receive a special large certificate, a photo in the weekly newsletter and morning tea with the principal.

Note to Parents

Please be sure to keep the awards your child brings home. They will need to present them to their teacher to receive the next acknowledgment. Once claimed, your teacher will sign and date the back of the award.

We look forward to sharing the STRENGTH of this program with acknowledgments, awards and learning.

[illegible]

Student Rights and Responsibilities

The following rights and responsibilities are the framework of expectation for and by every student at our school.

Rights at School

1. I have the right to be happy and to be treated with compassion. No one should laugh at me or hurt my feelings.
2. I have the right to be treated with respect and politeness.
3. I have the right to be safe. No one should threaten me, hit me, or hurt me in any way.
4. I have the right to expect my property to be safe.
5. I have the right to obtain maximum benefit from lessons.
6. I have the right to expect that educational activities will be of benefit to me.
7. I have the right to be myself. No one should treat me unfairly because I am different from him/her.
8. I have the right to have my good health habits respected.
9. I have the right to have pleasant, clean and well maintained grounds.
10. I have the right to be provided with a school where I am not in any physical danger.
11. I have the right to expect that the local community will provide support for the school and will respect and have pride in the school.
12. I have the right to be helped to learn self-control. I have the right to be helped to learn self-discipline. No one will ignore me if others abuse my rights.

Responsibilities at School

1. I have the responsibility to treat others with compassion, not to laugh at others, tease others or try to hurt the feelings of others.
2. I have the responsibility to be polite to others and to treat them with respect.
3. I have the responsibility to respect the authority of teachers.
4. I have the responsibility to use acceptable language when speaking to others.
5. I have the responsibility to make the school safe by not threatening anyone, hitting anyone or hurting anyone in any way.
6. I have the responsibility not to steal, damage, destroy or interfere with the property of others.
7. I have the responsibility to co-operate with teachers and other students to ensure that lessons proceed smoothly and that I keep up-to-date with required work. I will not behave so as to interfere with other students' right to learn.
8. I have the responsibility to be punctual, to attend school regularly, and to contribute to school activities so that they will be of benefit to me.
9. I have the responsibility to respect others as individuals and not to treat them unfairly because I might not agree with their appearance, beliefs or values.
10. I have the responsibility to be clean and tidy in appearance.
11. I have the responsibility to care for the school environment and keep it tidy and clean.
12. I have the responsibility to tell teachers about dangerous objects and other dangers in and around the school.
13. I have the responsibility to behave in a way that will gain respect for the school, especially when going to or coming from school and on out of school activities.
14. I have the responsibility to learn self-discipline.
15. I have the responsibility to respect the rights of others.

Uniform

The wearing of school uniform is a pledge of loyalty to the school and an important contribution to the school tone. A uniform dress code reinforces in students a pride in their own appearance, instils recognition of themselves as an integral part of the school community and assists in developing pride in representing their school.

The school uniform, is available from our school office. Students should wear correct school shoes every day except on sports days when sports shoes must be worn.

THONGS AND SANDALS ARE NOT PERMITTED

Summer uniform is worn during the first and fourth terms and winter uniform in second and third terms. A buffer period while the weather is changing is allowed. Students may wear either summer or winter but **NOT** a mixture of both. During winter, extra clothes may be worn under the school uniform for warmth, as long as these cannot be seen.

Sports uniform is for sports day only (each Wednesday) and may be worn to school. Students may also wear sports uniform to the cross country, athletics carnival and swimming carnival and other sporting events or organised by the school.

Parents can assist each other by sending unwanted second- hand uniforms to the school to be added to our clothing pool.

Sneakers may be worn with the dress uniform on Friday only.

	SUMMER	WINTER	SPORTS
GIRLS	Summer shirt with emblem Tartan skorts Navy socks Black lace up school shoes	Winter shirt with emblem Tartan skirt (3-6) Tartan pinafore (K-2) Navy woollen jumper with emblem Tartan tie Navy socks or navy stockings Black lace up school shoes	Burgundy/navy polo shirt with emblem Navy shorts Navy track pants Socks & sneakers Rugby jersey
BOYS	Summer shirt with emblem Grey shorts - not cargo Grey socks Black lace up school shoes	Winter shirt with emblem Grey long pants - not cargo Tartan tie Navy woollen jumper with emblem Grey socks Black lace up school shoes	Burgundy/navy polo shirt with emblem Navy shorts Navy track pants Socks & sneakers Rugby jersey

Uniform Shop

The uniform shop is operated by the school and is located in the administration office and is open every day of the school week. If you require any piece of the uniform please contact the office staff in person or over the phone and they can facilitate the purchase. All uniforms must be paid for in full at the time of purchase. The uniform shop does not stock socks or school shoes.

The uniform shop collects and distributes pre-loved uniforms. These uniforms are available free of charge to any school family who may need them. Stock is limited and we encourage families to donate any uniform they no longer require so other members of our school community can use these uniforms.

Please note that all uniform items are compulsory and can be purchased from the school office.

BOYS	
Summer Shirt	\$30.00
Summer Shirt (16+)	\$35.00
Grey Shorts	\$28.00
Winter Shirts	\$35.00
Grey Pants (4-16)	\$40.00
Woollen Jumper	\$55.00
Fleecy Jumper	\$20.00
Tie	\$15.00
GIRLS	
Summer Shirt	\$30.00
Summer Shirt (+16)	\$35.00
Tartan Skorts	\$45.00
Winter Shirts	\$35.00
Winter Shirts (+16)	\$40.00
Tartan Skirt (6-10)	\$55.00
Tartan Skirt (12-16)	\$58.00
Tartan Pinafore	\$58.00
Woollen Jumper	\$55.00
Fleecy Jumper	\$20.00
Tie	\$15.00
Cotton Tights	\$8.00

SPORTS	
Polo Shirt	\$25.00
Navy Short	\$20.00
Track Pant	\$25.00
Rugby Jumper	\$75.00
Hat	\$15.00
P-K Hat	\$12.00
School Bag	\$65.00 Primary
	\$75.00 Senior

Administration		
NAME	RESPONSIBILITIES	EMAIL ADDRESS
Debbie Robertson	Principal	principal@narrominechristianschool.nsw.edu.au
Jennifer Richardson	Registrar	registrar@narrominechristianschool.nsw.edu.au
Catherine Chapman	WHS Officer Office Administration	
Penford Feo	I T Assistant	
Nathan Robson	School Chaplain	
Teaching Staff		
Sheli Roberts	Pre-Kindergarten	
Ebonee Harris	Kindergarten Teacher	
Madeline Feo	Year 1 Teacher	
Sophie Payne	Year 2 Teacher	
Tiana Smith	Year 3 Teacher	
Anthony Smith	Year 4 Teacher & Curriculum Co-Ordinator	
Beth Reynolds	Year 5 Teacher	
Greg Walsh	Year 6 Teacher	
Miranda Walsh	Learning Support Co-ordinator	
Rachel Hall	Learning Support & Release	
Helen Whalley	Part Time Teacher	
Amy Carruthers	Part Time Teacher	
Erin McGregor	Part Time Teacher	
Ancillary Staff		
Kylie Field	Teachers Aide	
Alex Newbigging	Teachers Aide	

Thoughts for Students

- Learn to know Jesus and live as God's Word tells you.
- Do your best to be successful at your school work.
- Bring all necessary material to class and complete set work on time.
- Have sufficient sleep so you will feel fresh each school day.
- Avoid TV programs, reading and music that are inappropriate for your age level, so that your mind is free to learn in class.
- Eat plenty of full grains, fruit and vegetables; avoid eating too much sugary and fatty food to help you stay healthy.
- Be polite and respectful when you speak to others.
- Be obedient.
- Co-operate willingly with school directed activities.
- Show common sense.
- Keep your school clean and tidy.
- Wear the school uniform in a representative manner.
- Make your school a happy place by avoiding fights, bad language and acts of vandalism.
- Make the most of your time at school. Your teachers can help you to learn and enjoy your work but your effort is vital.

"And whatever you do, whether in word or deed, do it all in the name of the Lord Jesus,

Term Dates

The term dates for the 2022 school year are as follows:

Term 1	January 27, 2022	to	April 8, 2022
Term 2	April 26, 2022	to	July 1, 2022
Term 3	July 25, 2022	to	September 23, 2022
Term 4	October 10, 2022	to	December 9, 2022

Telephone Usage

Wherever possible, restrict incoming calls to after 8:20am. The Registrar and administration team work between the hours of 8.20 am and 4:00 pm.

Parents should ensure, where possible, that after school travel and other arrangements are communicated to their children (and to the teacher or bus driver) before children leave for school. **No student can change their normal mode of transport home without a letter or parent phone call.** Students will not be removed from the classroom to take phone calls however a message may be left with the office staff to convey to the student.

If you wish to talk to the teaching staff please call at recess, lunch or after school.

School at a Glance		
Monday	Canteen Newsletter	9.30 am to 2.30 pm
Tuesday	Pre Kindy	
Wednesday	Sports Day - sports uniform Pre Kindy	
Thursday	Canteen Pre Kindy	9.30 am to 2.30 pm
Friday	Music Lessons Chapel FUSE (monthly)	12.30 pm to 3.00 pm 2.10 pm to 2.50 pm 6.30 pm to 8.30 pm
School start time	8.45 am	
Recess	11.00 am	
Lunch	1.00 pm	
School Finish time	3.00 pm	
Uniform Shop	Monday to Friday	8.20 am to 4.00 pm
Swimming Carnival	Term 1	
Cross Country	Term 1	
Athletics Carnival	Term 2	
Website	www.narrominechristianschool.com	
School App - School Stream	download School Stream onto your smart phone for all reminders, attendance forms, permission notes etc.	
Home & School Committee Meetings	twice per term or as required	



NARROMINE
CHRISTIAN SCHOOL



Address: 147-153 Terangion Street Narromine NSW 2821

Phone: (02) 6889 2510

Email: registrar@narrominechristianschool.nsw.edu.au

Website: narrominechristianschool.com

Principal: Mrs Debbie Robertson

Nurture for today. Learning for tomorrow. Character for eternity.